

# Welcome

## **SECONDARY 4/5 PARENT TEACHER MEETING**

**17 FEBRUARY 2023**



**CHIJ St. Joseph's Convent**  
*Since 1938*

# Setting Goals

- What is her career aspiration?
- Where does she want to pursue her post secondary education? (eg: JC, IB, MI, Poly)
- What course does she want to embark on?
- What aggregate score (L1R5, L1R4 L1R2B2) does she need to achieve?
- What are her targets for the respective subjects?
- How is she going to achieve her goals?



**CHIJ St. Joseph's Convent**  
*Since 1938*



CH  
Sin



# National School Games



**CHIJ St. Joseph's Convent**  
*Since 1938*



## GOLD AWARD



NPCC

## SILVER AWARD



Girl Guides



# CERTIFICATE OF DISTINCTION



Indian Dance



Modern Dance



Angklung & Kulingtan Ensemble



**CHIJ St. Joseph's Convent**  
*Since 1938*



CentreStage - Drama



# CERTIFICATE OF ACCOMPLISHMENT



Guitar Ensemble



Concert Band



Handbell &  
Handchime Ensemble



**CHI St. Joseph's Convent**  
*Since 1938*

# SUPPORT FROM PARENTS

- Regular Attendance (present, punctual)
- Better Attention (sleep, nutrition & exercise)
- Right Attitude (self-discipline & consistent work)



It takes a  
village to  
raise a child....



**CHIJ St. Joseph's Convent**  
*Since 1938*



A spark grows into a flame, and all who draw near share its warmth. In the past 85 years since our school's founding, SJC has nurtured the spark in every girl into a steadfast glow that lights the way for her and for others. This year, we celebrate our rich heritage and are grateful for the many blessings that we have received as a school.

Central to the SJC 85<sup>th</sup> Anniversary logo is the light that emanates and shines from within. It is a symbol that inspires us to put Christ the Light at the centre of all we do, as we respond to the call to serve the larger community by bringing forth the light from within and shining it for others.



**CHI St. Joseph's Convent**  
Since 1938



Thank You &  
God Bless





**CHIJ St. Joseph's Convent**

*Since 1938*

**Post-Secondary Educational Pathways**



# Possible pathways

- 2-year A-Level Course
- L1R5 = 20 points and below

**Junior College**



- 3-year A-Level Course
- L1R4 = 20 points and below

**Millennia Institute**



- Pursuit of Diploma
- ELR2B2 = 26 points and below

**Polytechnic**



**CHIJ St. Joseph's Convent**  
*Since 1938*

# Possible pathways

- Requirements vary
- Sat for at least 5 GCE O Level subjects
- ELB4 / ELR1B3 / ELR2B2

ITE (Higher  
NITEC and  
NITEC)



- A Pass in EL
- 25 points or better in 4 GCE O Level subjects
- Admission test/portfolio/interview

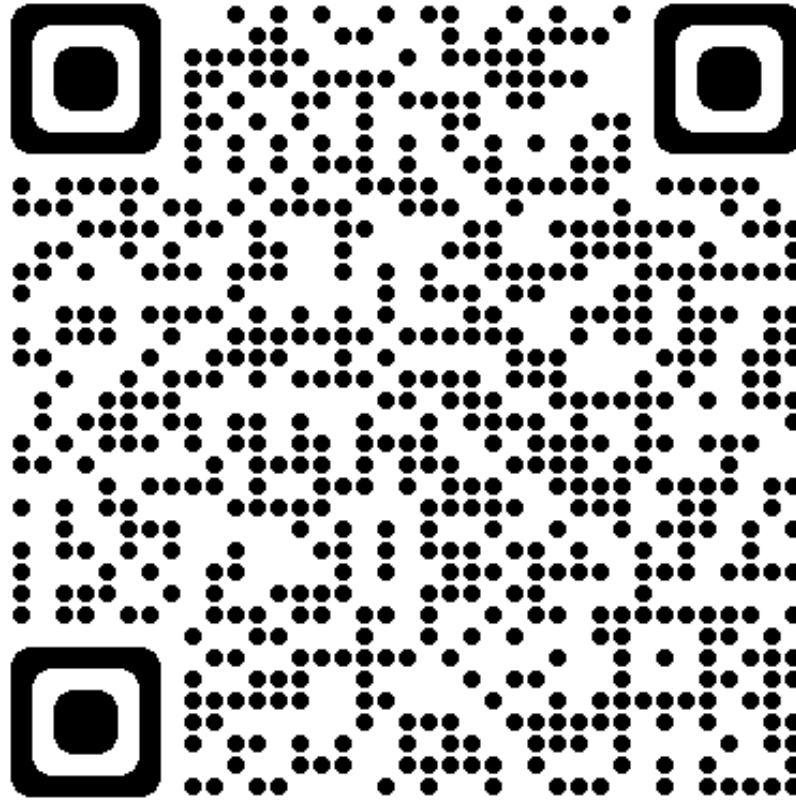
Arts Institutions  
(LASELLE &  
NAFA)



**CHIJ St. Joseph's Convent**  
*Since 1938*



# Joint Admissions Exercise 2023: Info Booklet



<https://go.gov.sg/jaeinfo>



**CHIJ St. Joseph's Convent**  
*Since 1938*

# Admission to Junior College

# Computation of L1R5 *(for JC Admission)*

L1	<ul style="list-style-type: none"> <li>English</li> <li>Higher MTL</li> </ul>
R1	<ul style="list-style-type: none"> <li>Humanities</li> </ul>
R2	<ul style="list-style-type: none"> <li>Mathematics OR</li> <li>Science</li> </ul>
R3	<ul style="list-style-type: none"> <li>Humanities OR</li> <li>Mathematics OR</li> <li>Science</li> </ul>
R4	<ul style="list-style-type: none"> <li>Any GCE O-level Subject</li> </ul>
R5	<ul style="list-style-type: none"> <li>Any GCE O-level Subject</li> </ul>





# Example (of how L1R5 is calculated)

<b>L1</b>	English Language	A2
<b>R5</b>	Social Studies/History	A2
	Elementary Math	A1
	Science (Physics/Chemistry)	A2
	Mother Tongue Language	B3
	Art	A2

**L1R5 = 12 points**



# Junior College Requirements

Aggregate Range for L1R5 (excludes bonus points) <i>For further details on computing the aggregate, please refer to Section 5 Table 6.</i>	Meet Subject Requirements as specified in Table 10 ?	
	Yes	No
≤ 15	Eligible	Eligible for <i>Conditional Admission</i>
16 – 20		Eligible for <i>Conditional Admission</i> only if students have grades of 'A1' or 'A2' in all the R5 subjects

Table 10  
Subject Requirements

Subject	Requirement
English Language	A1 to C6
Mother Tongue Language * :	
Chinese Language, Malay Language, Tamil Language	A1 to D7
<u>OR</u> Higher Chinese Language, Higher Malay Language, Higher Tamil Language	A1 to E8
<u>OR</u> Chinese Language 'B' Syllabus (CLB), Malay Language 'B' Syllabus (MLB), Tamil Language 'B' Syllabus (TLB)	Merit or Pass
Mathematics:	
Mathematics	A1 to D7
<u>OR</u> Additional Mathematics	A1 to D7



**Table D-1 : L1R5 Aggregate Scores (with Bonus Points) of  
Students Admitted to JCs in the Previous Year's (2022) JAE**

S/No	JC Name	Arts		Science/IB	
		Course Code	Previous (2022) JAE Net L1R5	Course Code	Previous (2022) JAE Net L1R5
1	Anderson Serangoon Junior College	39A	11	39S	10
2	Anglo-Chinese Junior College	22A	9	22S	8
3	Anglo-Chinese School (Independent)	-	-	51I	5
4	Catholic Junior College	23A	13	23S	13
5	Dunman High School	44A	9	44S	8
6	Eunoia Junior College	38A	8	38S	6
7	Hwa Chong Institution	24A	5	24S	4
8	Jurong Pioneer Junior College	40A	16	40S	14
9	Nanyang Junior College	26A	6	26S	5
10	National Junior College	27A	8	27S	7
11	Raffles Institution	28A	5	28S	4
12	River Valley High School	45A	9	45S	8
13	St. Andrew's Junior College	30A	11	30S	9
14	St. Joseph's Institution	-	-	52I	7
15	Tampines Meridian Junior College	41A	13	41S	13
16	Temasek Junior College	32A	9	32S	8
17	Victoria Junior College	33A	8	33S	7
18	Yishun Innova Junior College	42A	19	42S	19



# International Baccalaureate Diploma Programme

- An alternative to the GCE 'A' Levels
- **Recognised for admission to all Singapore universities** and leading universities globally
- **Holistic curriculum** and strong focus **on independent learning and thinking** for university studies, the workplace and the all-round development of young people
- Strong emphasis on **internationalism, intercultural understanding** and **making a positive difference** to the world



**CHIJ St. Joseph's Convent**  
*Since 1938*

# International Baccalaureate Diploma Programme



- Study six subjects chosen from six subject groups
- Complete an Extended Essay
- Follow a Theory of Knowledge course
- Participate in Creativity, Activity, Service

Group 1: Studies in Language & Literature	Group 2: Language Acquisition ^	Group 3: Individuals & Societies	Group 4: Experimental Science	Group 5: Mathematics	Group 6: The Arts (or Elective)
<ul style="list-style-type: none"> <li>• English: Literature</li> <li>• English: Language and Literature</li> <li>• Chinese: Literature</li> </ul>	<ul style="list-style-type: none"> <li>• Chinese B</li> <li>• Malay B</li> <li>• Tamil B #</li> <li>• Mandarin Ab Initio</li> <li>• Spanish Ab Initio</li> </ul>	<ul style="list-style-type: none"> <li>• Economics</li> <li>• Geography</li> <li>• History</li> </ul>	<ul style="list-style-type: none"> <li>• Biology</li> <li>• Chemistry</li> <li>• Physics</li> </ul>	<ul style="list-style-type: none"> <li>• Maths Analysis and Approaches</li> </ul>	<ul style="list-style-type: none"> <li>• Music</li> <li>• Visual Arts</li> </ul> <p><i>(Elective: Instead of an Arts subject, students can choose a subject from Group 3 or 4)</i></p>

*Examples of IB subjects offered by St. Joseph's Institution*



**CHIJ St. Joseph's Convent**  
Since 1938

# Direct School Admission for JC (DSA-JC)

- Apply to a DSA school before taking the GCE O-Level examinations
- Application based on **talent in sports, CCAs and specific academic areas that may not be demonstrated at the O-Level examinations**
- Information on DSA is usually published around May. Visit participating schools' websites for more details about DSA-JC. Each school will have its own start date and deadline for applications.



MOE's micro-site on DSA: <https://www.moe.gov.sg/post-secondary/admissions/dsa>

**CHI St. Joseph's Convent**

*Since 1938*



# Admission to Millennia Institute

## Computation of L1R4 (for MI)

L1

- English OR
- Higher MTL

R1

- Humanities OR
- Math OR
- Science

R2

- Humanities OR
- Math OR
- Science

R3

- Any GCE O-Level subject

R4

- Any GCE O-Level subject



# Example (of how L1R4 is calculated)

<b>L1</b>	English Language	A2
<b>R4</b>	Social Studies/History	A2
	Elementary Math	A1
	Science (Physics/Chemistry)	A2
	Mother Tongue Language	B3

**L1R4 = 10 points**





# Cut-off points for Millennia Institute (2022)

<b>Arts</b>	<b>Science</b>	<b>Commerce</b>
6 to 20	9 to 20	8 to 18



**CHIJ St. Joseph's Convent**  
*Since 1938*

# Admission to Polytechnic

# ELR2B2

**1<sup>st</sup> group of relevant subjects**

**2<sup>nd</sup> group of relevant subjects**

		ELR2B2 : For Polytechnic Courses			
Aggregate Type		ELR2B2 -A	ELR2B2-B	ELR2B2-C	ELR2B2-D
EL		English			
R2	1 <sup>st</sup> Group of Relevant Subjects	Art/Art & Design Business Studies Combined Humanities Commerce Commercial Studies Economics Geography Higher Art Higher Music History Intro to Enterprise Development Literature in English Literature in Chinese Literature in Malay Literature in Tamil Media Studies (English) Media Studies (Chinese) Music	Elementary Mathematics Additional Mathematics		
	2 <sup>nd</sup> Group of Relevant Subjects	Additional Mathematics Art/Art & Design Business Studies Chinese Combined Humanities Commerce Commercial Studies Creative 3D Animation Design & Technology Design Studies Economics Elementary Mathematics Food & Nutrition Geography Higher Art Higher Chinese Higher Malay Higher Music Higher Tamil History Intro to Enterprise Development Literature in English Literature in Chinese Literature in Malay Literature in Tamil Malay Media Studies (English) Media Studies (Chinese) Music Principles of Accounts Tamil	Art / Art & Design Business Studies Combined Humanities Commerce Commercial Studies Economics Geography Higher Art Higher Music History Intro to Enterprise Development Literature in English Literature in Chinese Literature in Malay Literature in Tamil Media Studies (English) Media Studies (Chinese) Music Principles of Accounts	Add <sup>B</sup> Combined Science Additional Science Biology Biotechnology Chemistry Combined Science Computer Studies Creative 3D Animation Design & Technology Engineering Science Food & Nutrition Fundamentals of Electronics General Science Human & Social Biology Integrated Science Physics Physical Science Science (Chem, Bio) Science (Phy, Bio) Science (Phy, Chem) Science (Phy, Chem, Bio)	Add <sup>B</sup> Combined Science Additional Science Art / Art & Design Biology Biotechnology Chemistry Combined Science Computer Studies Creative 3D Animation Design & Technology Design Studies Engineering Science Food & Nutrition Fundamentals of Electronics General Science Higher Art Human & Social Biology Integrated Science Media Studies (English) Media Studies (Chinese) Physics Physical Science Science (Chem, Bio) Science (Phy, Bio) Science (Phy, Chem) Science (Phy, Chem, Bio)
B2		Best 2 other subjects excluding CCA			



# **ELR2B2-A: Media, Humanities and Social Sciences**



# A preview of the course for different aggregate types (A)

Course	Polytechnic	Course Code	Aggregate Type	Award
Social Sciences in Gerontology	TP	T53	A	Dip Social Sciences in Gerontology
Social Work	NYP	C47	A	Dip Social Work
Early Childhood Development & Education	NP	N96	A	Dip Early Childhood Development & Education
Early Childhood Development & Education	TP	T68	A	Dip Early Childhood Development & Education
Tamil Studies with Early Education	NP	N95	A	Dip Tamil Studies with Early Education
Chinese Studies	NP	N70	A	Dip Chinese Studies
Community Development	NP	N11	A	Dip Community Development
Psychology Studies	TP	T48	A	Dip Psychology Studies
Chinese Media & Communication	NP	N88	A	Dip Chinese Media & Communication
Common Arts, Design and Media Programme <b>(New)</b>	RP	R65	A	Dip Arts & Theatre Management/ Dip Design for Games & Gamification/ Dip Design for User Experience/ Dip Media Production & Design/ Dip Sonic Arts

# A preview of the course for different aggregate types (A)

Course	Polytechnic	Course Code	Aggregate Type	Award
Common Media Programme ( <b>New</b> )	NP	N14	A	Dip Film, Sound & Video/ Dip Mass Communication/ Dip Media Post-Production
Mass Communication	NP	N67	A	Dip Mass Communication
Mass Communication	RP	R32	A	Dip Mass Communication

# **ELR2B2-B: Business and Management**

# A preview of the course for different aggregate types (B)

Course	Polytechnic	Course Code	Aggregate Type	Award
Banking & Finance	NYP	C96	B	Dip Banking & Finance
Banking & Finance	SP	S76	B	Dip Banking & Finance
Business	RP	R60	B	Dip Business
Business	TP	T10	B	Dip Business
Accountancy	NP	N51	B	Dip Accountancy
Accountancy	SP	S75	B	Dip Accountancy
Accountancy & Finance	NYP	C98	B	Dip Accountancy & Finance
Accountancy & Finance	TP	T02	B	Dip Accountancy & Finance
Arts Business Management	NP	N91	B	Dip Arts Business Management
Common Business Programme	NP	N97	B	Dip Accountancy/ Dip Banking & Finance/ Dip Business Studies/ Dip International Trade & Business/ Dip Tourism & Resort Management



# A preview of the course for different aggregate types (B)

Course	Polytechnic	Course Code	Aggregate Type	Award
Consumer Behaviour & Research	RP	R48	B	Dip Consumer Behaviour & Research
Culinary & Catering Management	TP	T18	B	Dip Culinary & Catering Management
Customer Experience Management with Business	RP	R34	B	Dip Customer Experience Management with Business
Food & Beverage Business	NYP	C46	B	Dip Food & Beverage Business
Hospitality & Tourism Management	NYP	C67	B	Dip Hospitality & Tourism Management
Hospitality & Tourism Management	TP	T08	B	Dip Hospitality & Tourism Management
Hotel & Hospitality Management	RP	R37	B	Dip Hotel & Hospitality Management
Human Resource Management with Psychology	RP	R52	B	Dip Human Resource Management with Psychology
Human Resource Management with Psychology	SP	S48	B	Dip Human Resource Management with Psychology

# A preview of the course for different aggregate types (B)

Course	Polytechnic	Course Code	Aggregate Type	Award
Integrated Events Management	RP	R28	B	Dip Integrated Events Management
International Trade & Business	NP	N85	B	Dip International Trade & Business
Law & Management	TP	T09	B	Dip Law & Management
International Trade & Logistics	TP	T07	B	Dip International Trade & Logistics
Marketing	TP	T67	B	Dip Marketing
Mass Media Management	NYP	C93	B	Dip Mass Media Management
Outdoor & Adventure Learning	RP	R33	B	Dip Outdoor & Adventure Learning
Restaurant & Culinary Operations	RP	R46	B	Dip Restaurant & Culinary Operations
Sport & Wellness Management	NYP	C81	B	Dip Sport & Wellness Management
Tourism & Resort Management	NP	N72	B	Dip Tourism & Resort Management
Tourism Management with Technology (New)	RP	R64	B	Dip Tourism Management with Technology

# **ELR2B2-C: Applied Sciences, Engineering, Health Sciences, Information and Digital Technologies, Maritime Studies and Built Environment**

# A preview of the course for different aggregate types (C)

Course	Polytechnic	Course Code	Aggregate Type	Award
<b>A. APPLIED SCIENCES</b>				
Applied Chemistry	NYP	C45	C	Dip Applied Chemistry
Applied Chemistry	RP	R17	C	Dip Applied Chemistry
Applied Chemistry	SP	S64	C	Dip Applied Chemistry
Biologics & Process Technology	NYP	C49	C	Dip Biologics & Process Technology
Biomedical Engineering	TP	T38	C	Dip Biomedical Engineering
Biomedical Science	NP	N59	C	Dip Biomedical Science
Biomedical Science	RP	R14	C	Dip Biomedical Science
Biomedical Science	SP	S98	C	Dip Biomedical Science (Biotechnology)/ Dip Biomedical Science (Cardiac Technology)/ Dip Biomedical Science (Medical Technology)
Biotechnology	RP	R16	C	Dip Biotechnology
Chemical & Biomolecular Engineering	NP	N56	C	Dip Chemical & Biomolecular Engineering
Chemical & Pharmaceutical Technology	NYP	C73	C	Dip Chemical & Pharmaceutical Technology
Chemical Engineering	SP	S70	C	Dip Chemical Engineering
Chemical Engineering	TP	T33	C	Dip Chemical Engineering



# A preview of the course for different aggregate types (C)

Course	Polytechnic	Course Code	Aggregate Type	Award
Common Science Programme ( <b>New</b> )	SP	S28	C	Dip Applied Chemistry/ Dip Biomedical Science (Biotechnology)/ Dip Biomedical Science (Cardiac Technology)/ Dip Biomedical Science (Medical Technology)/ Dip Food Science & Technology/ Dip Perfumery & Cosmetic Science
Common Science Programme ( <b>New</b> )	TP	T70	C	Dip Chemical Engineering/ Dip Food, Nutrition & Culinary Science/ Dip Medical Biotechnology/ Dip Pharmaceutical Science/ Dip Veterinary Technology
Environmental & Marine Science	RP	R62	C	Dip Environmental & Marine Science
Environmental & Water Technology	NP	N74	C	Dip Environmental & Water Technology
Food, Nutrition & Culinary Science	TP	T26	C	Dip Food, Nutrition & Culinary Science
Food Science & Nutrition	NYP	C69	C	Dip Food Science & Nutrition
Food Science & Technology	SP	S47	C	Dip Food Science & Technology

# A preview of the course for different aggregate types (C)

Course	Polytechnic	Course Code	Aggregate Type	Award
Civil Engineering	SP	S68	C	Dip Civil Engineering
Facilities Management	SP	S95	C	Dip Facilities Management
Hotel & Leisure Facilities Management	NP	N40	C	Dip Hotel & Leisure Facilities Management
Integrated Events & Project Management	SP	S50	C	Dip Integrated Events & Project Management
Integrated Facility Management	TP	T28	C	Dip Integrated Facility Management
Aerospace Engineering	NP	N65	C	Dip Aerospace Engineering
Aerospace Engineering	RP	R40	C	Dip Aerospace Engineering
Aerospace Engineering	TP	T51	C	Dip Aerospace Engineering
Aerospace Systems & Management	NYP	C52	C	Dip Aerospace Systems & Management
AI & Data Engineering	NYP	C31	C	Dip AI & Data Engineering
Aviation Management	RP	R39	C	Dip Aviation Management
Aviation Management	TP	T04	C	Dip Aviation Management

# A preview of the course for different aggregate types (C)

Course	Polytechnic	Course Code	Aggregate Type	Award
Common Engineering Programme	SP	S40	C	Dip Aeronautical Engineering/ Dip Aerospace Electronics/ Dip Computer Engineering/ Dip Electrical & Electronic Engineering/ Dip Engineering with Business/ Dip Mechanical Engineering/ Dip Mechanical Engineering (Biomedical)/ Dip Mechatronics & Robotics
Common Engineering Programme	TP	T56	C	Dip Aerospace Electronics/ Dip Aerospace Engineering/ Dip Biomedical Engineering/ Dip Business Process & Systems Engineering/ Dip Computer Engineering/ Dip Electronics/ Dip Mechatronics
Computer Engineering	SP	S53	C	Dip Computer Engineering
Computer Engineering	TP	T13	C	Dip Computer Engineering
Electrical & Electronic Engineering	RP	R50	C	Dip Electrical & Electronic Engineering
Electrical & Electronic Engineering	SP	S99	C	Dip Electrical & Electronic Engineering
Electrical Engineering	NP	N43	C	Dip Electrical Engineering
Electronic & Computer Engineering	NP	N44	C	Dip Electronic & Computer Engineering

# A preview of the course for different aggregate types (C)

Course	Polytechnic	Course Code	Aggregate Type	Award
Common Sports and Health Programme	RP	R63	C	Dip Health Management & Promotion/ Dip Health Services Management/ Dip Outdoor & Adventure Learning/ Dip Sport Coaching/ Dip Sport & Exercise Science
Health Management & Promotion	RP	R43	C	Dip Health Management & Promotion
Health Services Management	RP	R45	C	Dip Health Services Management
Nursing	NP	N69	C	Dip Nursing
Nursing	NYP	C97	C	Dip Nursing
Optometry	NP	N83	C	Dip Optometry
Optometry	SP	S67	C	Dip Optometry
Oral Health Therapy	NYP	C72	C	Dip Oral Health Therapy
Sport & Exercise Science	RP	R26	C	Dip Sport & Exercise Science
Sport Coaching	RP	R49	C	Dip Sport Coaching



# A preview of the course for different aggregate types (C)

Course	Polytechnic	Course Code	Aggregate Type	Award
Applied AI & Analytics <i>(Previously known as Business Intelligence &amp; Analytics)</i>	NYP	C43	C	Dip Applied AI & Analytics
Applied AI & Analytics	SP	S30	C	Dip Applied AI & Analytics
Applied Artificial Intelligence	TP	T69	C	Dip Applied Artificial Intelligence
Big Data & Analytics	TP	T60	C	Dip Big Data & Analytics
Business Information Systems	RP	R13	C	Dip Business Information Systems
Common ICT Programme	NP	N98	C	Dip Cybersecurity & Digital Forensics/ Dip Data Science/ Dip Immersive Media/ Dip Information Technology
Cybersecurity & Digital Forensics	TP	T62	C	Dip Cybersecurity & Digital Forensics
Data Science	NP	N81	C	Dip Data Science
Digital Design & Development	RP	R47	C	Dip Digital Design & Development
Financial Technology	RP	R18	C	Dip Financial Technology
Game Development & Technology	NYP	C70	C	Dip Game Development & Technology

# A preview of the course for different aggregate types (C)

Course	Polytechnic	Course Code	Aggregate Type	Award
Information Technology	NP	N54	C	Dip Information Technology
Information Technology	NYP	C85	C	Dip Information Technology
Information Technology	RP	R12	C	Dip Information Technology
Information Technology	SP	S69	C	Dip Information Technology
Information Technology	TP	T30	C	Dip Information Technology
<b>I. MARITIME STUDIES</b>				
Marine & Offshore Technology	NP	N42	C	Dip Marine & Offshore Technology
Marine Engineering	SP	S63	C	Dip Marine Engineering
Maritime Business	SP	S74	C	Dip Maritime Business

# **ELR2B2-D: Media and Design**

# A preview of the course for different aggregate types (D)

Course	Polytechnic	Course Code	Aggregate Type	Award
Communication & Motion Design <i>(New)</i> <i>(Course merger between Visual Communication and Motion Graphics Design)</i>	NYP	C30	D	Dip Communication & Motion Design
Communication Design	TP	T59	D	Dip Communication Design
Design	NP	N12	D	Dip Design
Design for Games & Gamification	RP	R35	D	Dip Design for Games & Gamification
Design for User Experience	RP	R36	D	Dip Design for User Experience
Digital Film & Television	TP	T23	D	Dip Digital Film & Television
Experiential Product & Interior Design <i>(Course merger between Experiential Product &amp; Interior Design and Interaction Design)</i>	NYP	C32	D	Dip Experiential Product & Interior Design
Film, Sound & Video	NP	N82	D	Dip Film, Sound & Video
Interior Architecture & Design	TP	T22	D	Dip Interior Architecture & Design

# ELR2B2

**1<sup>st</sup> group of relevant subjects**

**2<sup>nd</sup> group of relevant subjects**

		ELR2B2 : For Polytechnic Courses			
Aggregate Type		ELR2B2 -A	ELR2B2-B	ELR2B2-C	ELR2B2-D
EL		English			
R2	1 <sup>st</sup> Group of Relevant Subjects	Art/Art & Design Business Studies Combined Humanities Commerce Commercial Studies Economics Geography Higher Art Higher Music History Intro to Enterprise Development Literature in English Literature in Chinese Literature in Malay Literature in Tamil Media Studies (English) Media Studies (Chinese) Music	Elementary Mathematics Additional Mathematics		
	2 <sup>nd</sup> Group of Relevant Subjects	Additional Mathematics Art/Art & Design Business Studies Chinese Combined Humanities Commerce Commercial Studies Creative 3D Animation Design & Technology Design Studies Economics Elementary Mathematics Food & Nutrition Geography Higher Art Higher Chinese Higher Malay Higher Music Higher Tamil History Intro to Enterprise Development Literature in English Literature in Chinese Literature in Malay Literature in Tamil Malay Media Studies (English) Media Studies (Chinese) Music Principles of Accounts Tamil	Art / Art & Design Business Studies Combined Humanities Commerce Commercial Studies Economics Geography Higher Art Higher Music History Intro to Enterprise Development Literature in English Literature in Chinese Literature in Malay Literature in Tamil Media Studies (English) Media Studies (Chinese) Music Principles of Accounts	Add <sup>B</sup> Combined Science Additional Science Biology Biotechnology Chemistry Combined Science Computer Studies Creative 3D Animation Design & Technology Engineering Science Food & Nutrition Fundamentals of Electronics General Science Human & Social Biology Integrated Science Physics Physical Science Science (Chem, Bio) Science (Phy, Bio) Science (Phy, Chem) Science (Phy, Chem, Bio)	Add <sup>B</sup> Combined Science Additional Science Art / Art & Design Biology Biotechnology Chemistry Combined Science Computer Studies Creative 3D Animation Design & Technology Design Studies Engineering Science Food & Nutrition Fundamentals of Electronics General Science Higher Art Human & Social Biology Integrated Science Media Studies (English) Media Studies (Chinese) Physics Physical Science Science (Chem, Bio) Science (Phy, Bio) Science (Phy, Chem) Science (Phy, Chem, Bio)
B2		Best 2 other subjects excluding CCA			





ELR2B2-A	ELR2B2-B	ELR2B2-C	ELR2B2-D
English			
Art/Art & Design Business Studies Combined Humanities Commerce Commercial Studies Economics Geography Higher Art Higher Music History Humanities (Social Studies, Literature in English) Humanities (Social Studies, Literature in Chinese) Humanities (Social Studies, Literature in Malay) Humanities (Social Studies, Literature in Tamil) Humanities (Social Studies, History) Humanities (Social Studies, Geography) Intro to Enterprise Development Literature in English Literature in Chinese Literature in Malay Literature in Tamil Media Studies (English) Media Studies (Chinese) Music	Elementary Mathematics Additional Mathematics		

**1<sup>st</sup> group of relevant subjects**

ELR2B2-A	ELR2B2-B	ELR2B2-C	ELR2B2-D
Additional Mathematics Art/Art & Design Business Studies Chinese Combined Humanities Commerce Commercial Studies Creative 3D Animation Design & Technology Design Studies Economics Elementary Mathematics Food & Nutrition/Nutrition & Food Science Geography Higher Art Higher Chinese Higher Malay Higher Music Higher Tamil History Humanities (Social Studies, Literature in English) Humanities (Social Studies, Literature in Chinese) Humanities (Social Studies, Literature in Malay) Humanities (Social Studies, Literature in Tamil) Humanities (Social Studies, History) Humanities (Social Studies, Geography) Intro to Enterprise Development Literature in English Literature in Chinese Literature in Malay Literature in Tamil Malay Media Studies (English) Media Studies (Chinese) Music Principles of Accounts Tamil	Art/Art & Design Business Studies Combined Humanities Commerce Commercial Studies Economics Geography Higher Art Higher Music History Humanities (Social Studies, Literature in English) Humanities (Social Studies, Literature in Chinese) Humanities (Social Studies, Literature in Malay) Humanities (Social Studies, Literature in Tamil) Humanities (Social Studies, History) Humanities (Social Studies, Geography) Intro to Enterprise Development Literature in English Literature in Chinese Literature in Malay Literature in Tamil Media Studies (English) Media Studies (Chinese) Music Principles of Accounts	Add <sup>2</sup> Combined Science Additional Science Biology Biotechnology Chemistry Combined Science Computing/Computer Studies Creative 3D Animation Design & Technology Food & Nutrition/Nutrition & Food Science Electronics/Fundamentals of Electronics General Science Human & Social Biology Integrated Science Physics/Engineering Science Science (Chem, Bio) Science (Phy, Bio) Science (Phy,Chem)/ Physical Science Science (Phy, Chem, Bio)	Add <sup>2</sup> Combined Science Additional Science Art/Art & Design Biology Biotechnology Chemistry Combined Science Computing/Computer Studies Creative 3D Animation Design & Technology Design Studies Food & Nutrition/Nutrition & Food Science Electronics/Fundamentals of Electronics General Science Higher Art Human & Social Biology Integrated Science Media Studies (English) Media Studies (Chinese) Physics/Engineering Science Science (Chem, Bio) Science (Phy, Bio) Science (Phy, Chem)/Physical Science Science (Phy, Chem, Bio)

**2<sup>nd</sup> group of relevant subjects**

# Example (of how ELR2B2 is calculated)

L1	English Language	A2
	Social Studies/History	B4
	Elementary Math	A1
	Pure Chem	A2
	Mother Tongue Language	B3
	Additional Math	B3
	Pure Bio	A2

**ELR2B2-A = 11**

**ELR2B2-C = 10**



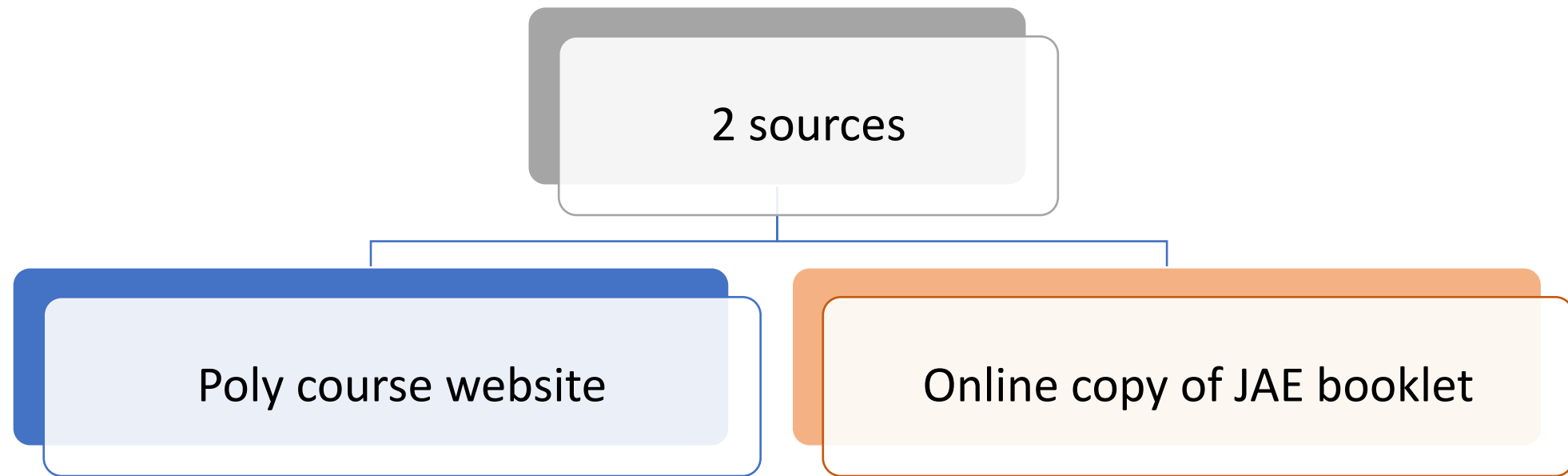
Common Media Programme ② ③ ④ (New Course in JAE)  At the end of the first semester, students will opt for one of the following Diploma courses:  • Film, Sound & Video ② ④ • Mass Communication • Media Post-Production ② ③ ④  (Note: Students opting to be streamed into the Diploma in Mass Communication must obtain grade 1 to 4 for O-level English Language)	N14	ELR2B2-A	-	<table><thead><tr><th></th><th><u>Subject</u></th><th><u>Grade</u></th></tr></thead><tbody><tr><td>a)</td><td>English Language</td><td>1-6</td></tr><tr><td>b)</td><td>Mathematics (Elementary/Additional)</td><td>1-7</td></tr><tr><td>c)</td><td>Any two other subjects</td><td>1-6</td></tr></tbody></table> <p><b>Note:</b> To be eligible for admission, you must also have sat for one subject listed in the 1<sup>st</sup> group of relevant subjects and another different subject listed in the 2<sup>nd</sup> group of relevant subjects for the ELR2B2-A Aggregate Type on p.28. Both subjects will be used for ELR2B2-A aggregate computation.</p>		<u>Subject</u>	<u>Grade</u>	a)	English Language	1-6	b)	Mathematics (Elementary/Additional)	1-7	c)	Any two other subjects	1-6
	<u>Subject</u>	<u>Grade</u>														
a)	English Language	1-6														
b)	Mathematics (Elementary/Additional)	1-7														
c)	Any two other subjects	1-6														
Mass Communication	N67	ELR2B2-A	4 to 11	<table><thead><tr><th></th><th><u>Subject</u></th><th><u>Grade</u></th></tr></thead><tbody><tr><td>a)</td><td>English Language</td><td>1-4</td></tr><tr><td>b)</td><td>Mathematics (Elementary/Additional)</td><td>1-7</td></tr><tr><td>c)</td><td>Any three other subjects</td><td>1-6</td></tr></tbody></table> <p><b>Note:</b> To be eligible for admission, you must also have sat for one subject listed in the 1<sup>st</sup> group of relevant subjects and another different subject listed in the 2<sup>nd</sup> group of relevant subjects for the ELR2B2-A Aggregate Type on p.28. Both subjects will be used for ELR2B2-A aggregate computation.</p>		<u>Subject</u>	<u>Grade</u>	a)	English Language	1-4	b)	Mathematics (Elementary/Additional)	1-7	c)	Any three other subjects	1-6
	<u>Subject</u>	<u>Grade</u>														
a)	English Language	1-4														
b)	Mathematics (Elementary/Additional)	1-7														
c)	Any three other subjects	1-6														

Architectural Technology & Building Services ③ ④  <b><u>Specialisations:</u></b> <ul style="list-style-type: none"><li>Architectural Technology</li><li>Environmental Sustainable Design</li><li>Building Information Modelling &amp; Management</li></ul>	T29	ELR2B2-C	6 to 16	<table><tr><th></th><th><u>Subject</u></th><th><u>Grade</u></th></tr><tr><td>a)</td><td>English Language</td><td>1-7</td></tr><tr><td>b)</td><td>Mathematics (Elementary/Additional)</td><td>1-6</td></tr><tr><td>c)</td><td>Any one of the following subjects:</td><td>1-6</td></tr><tr><td></td><td><ul style="list-style-type: none"><li>Biology</li><li>Biotechnology</li><li>Chemistry</li><li>Combined Science</li><li>Computing / Computer Studies</li><li>Design &amp; Technology</li><li>Electronics / Fundamentals of Electronics</li><li>Physics / Engineering Science</li><li>Science (Chemistry, Biology)</li><li>Science (Physics, Biology)</li><li>Science (Physics, Chemistry) / Physical Science</li></ul></td><td></td></tr></table>		<u>Subject</u>	<u>Grade</u>	a)	English Language	1-7	b)	Mathematics (Elementary/Additional)	1-6	c)	Any one of the following subjects:	1-6		<ul style="list-style-type: none"><li>Biology</li><li>Biotechnology</li><li>Chemistry</li><li>Combined Science</li><li>Computing / Computer Studies</li><li>Design &amp; Technology</li><li>Electronics / Fundamentals of Electronics</li><li>Physics / Engineering Science</li><li>Science (Chemistry, Biology)</li><li>Science (Physics, Biology)</li><li>Science (Physics, Chemistry) / Physical Science</li></ul>	
	<u>Subject</u>	<u>Grade</u>																	
a)	English Language	1-7																	
b)	Mathematics (Elementary/Additional)	1-6																	
c)	Any one of the following subjects:	1-6																	
	<ul style="list-style-type: none"><li>Biology</li><li>Biotechnology</li><li>Chemistry</li><li>Combined Science</li><li>Computing / Computer Studies</li><li>Design &amp; Technology</li><li>Electronics / Fundamentals of Electronics</li><li>Physics / Engineering Science</li><li>Science (Chemistry, Biology)</li><li>Science (Physics, Biology)</li><li>Science (Physics, Chemistry) / Physical Science</li></ul>																		
Integrated Facility Management ④  <b><u>Specialisations:</u></b> <ul style="list-style-type: none"><li>Project Management</li><li>Smart Facilities Management Technologies</li><li>Sustainable Facilities Management</li><li>Workplace Safety and Health Management</li></ul>	T28	ELR2B2-C	14 to 20																



Accountancy & Finance  <b><u>Specialisations:</u></b> ① <ul style="list-style-type: none"><li>Accounting</li><li>Investment &amp; Banking</li></ul>	T02	ELR2B2-B	4 to 13	<table><thead><tr><th></th><th><u>Subject</u></th><th><u>Grade</u></th></tr></thead><tbody><tr><td>a)</td><td>English Language</td><td>1-6</td></tr><tr><td>b)</td><td>Mathematics (Elementary/Additional)</td><td>1-6</td></tr><tr><td>c)</td><td>Any three other subjects</td><td>1-6</td></tr></tbody></table> <b><u>Note:</u></b> <i>To be eligible for admission, you must also have sat for one subject listed in the 2<sup>nd</sup> group of relevant subjects for the ELR2B2-B Aggregate Type on p.28. This subject will be used for ELR2B2-B aggregate computation.</i>		<u>Subject</u>	<u>Grade</u>	a)	English Language	1-6	b)	Mathematics (Elementary/Additional)	1-6	c)	Any three other subjects	1-6
	<u>Subject</u>	<u>Grade</u>														
a)	English Language	1-6														
b)	Mathematics (Elementary/Additional)	1-6														
c)	Any three other subjects	1-6														
Business  <b><u>Specialisations:</u></b> ① <ul style="list-style-type: none"><li>Banking &amp; Finance</li><li>Digital Business Innovation</li><li>Human Resource Management with Psychology</li><li>International Business &amp; Entrepreneurship</li></ul>	T10	ELR2B2-B	5 to 14													

# Latest Cut-off Points for Polytechnic Courses



# Latest Cut-off Points for Polytechnic Courses

Course	2023 Planned Intake	Range of Net 2023 JAE ELR2B2
<b>APPLIED SCIENCES</b>		
Applied Chemistry (S64)	75	4 to 9
Biomedical Science (S98)	75	3 to 7
Chemical Engineering (S70)	120	7 to 14
Common Science Programme (S28)		

## NANYANG POLYTECHNIC ACADEMIC YEAR 2023/24 PLANNED INTAKE and JAE RANGE of NET ELR2B2

This table shows the planned intake for NYP courses for AY2023/24 and the figures include students who will be admitted via the various admissions exercises that would be jointly or independently conducted by the Polytechnics.

2023 JAE Range of Net ELR2B2 shows the net ELR2B2 aggregate scores (English Language, 2 Relevant Subjects, 2 Best Subjects) of the lowest and highest ranked students who were admitted to these courses through the 2023 Joint Admissions Exercise (JAE) (for Singapore-Cambridge GCE 'O' Level qualification). These aggregate scores serve as a reference and do not constitute the admission scores for subsequent admissions exercises.

Courses by Group	JAE Code	AY2023 Planned Intake	2023 JAE Range of Net ELR2B2
<b>APPLIED SCIENCES</b>			
APPLIED CHEMISTRY	C45	23	4 to 10
BIOLOGICS & PROCESS TECHNOLOGY	C49	23	5 to 10
CHEMICAL & PHARMACEUTICAL TECHNOLOGY	C73	88	7 to 14
COMMON SCIENCE PROGRAMME (New Course in AY2023)	C27	116	8 to 12
FOOD SCIENCE & NUTRITION	C69	45	5 to 12
PHARMACEUTICAL SCIENCE	C65	59	6 to 10

Course	Aggregate Type	Range of Net ELR2B2 for 2023 JAE #	2023 Planned Intake
<b>Applied Sciences</b>			
Biomedical Science	C	3 to 7	60
Chemical & Biomolecular Engineering	C	8 to 12	75
Common Science Programme	C	8 to 9	50
Environmental & Water Technology	C	6 to 15	45
Landscape Design & Horticulture	D	4 to 16	40
Pharmaceutical Science	C	5 to 9	50
<b>Built Environment</b>			
Hotel & Leisure Facilities Management	C	7 to 17	65
Real Estate Business	C	8 to 14	75



**CHIJ School**  
Since 1931

# Polytechnic Early Admissions Exercise (EAE)

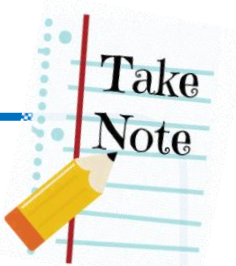
- An **aptitude-based admissions exercise** that allows students to apply for and receive conditional offers for admission to polytechnics prior to receiving their final grades.
- Polytechnics select and admit students based on their **aptitudes** and **interests**, apart from academic grades, thus allowing a wider range of talents to be recognised.



MOE's micro-site on EAE:  
<https://eae.polytechnic.edu.sg>

**EAE commences around June**

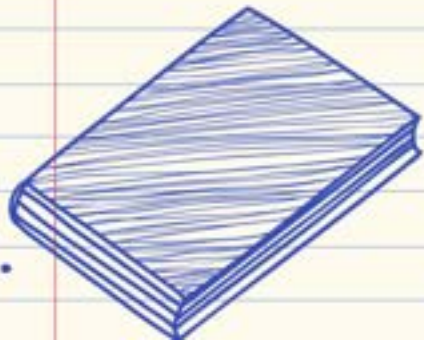
There are various stages in the process:  
Application → Selection → Offer & Acceptance





The journey:

Maintaining a steady pace



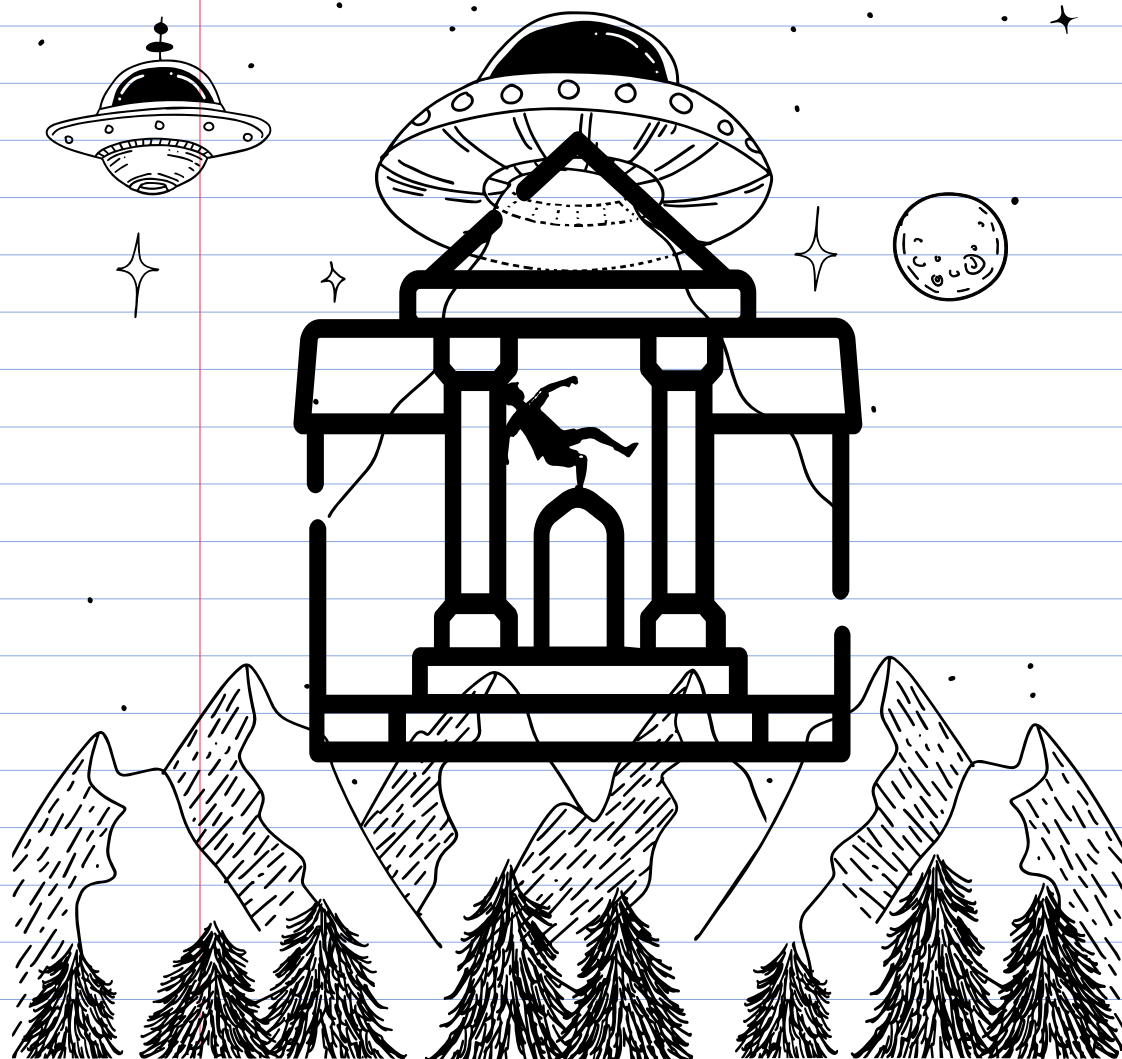


# Obtaining Clarity

Post-secondary options that can get me to my future career

JC route			Poly route		
Institution	Requirement (cut-off point)		Course	Institution	Requirement (cut-off point)
✦					

# Making informed choices



Determine the cut-off point (COP) for your desired course/ JC/ Poly.

Are there Minimum Entry Requirements (MERs) for some of the subjects(s)?

# Strategising



- WA1 & WA2
- Assignments



Current  
position



Prelim Exam



O-Level Exam

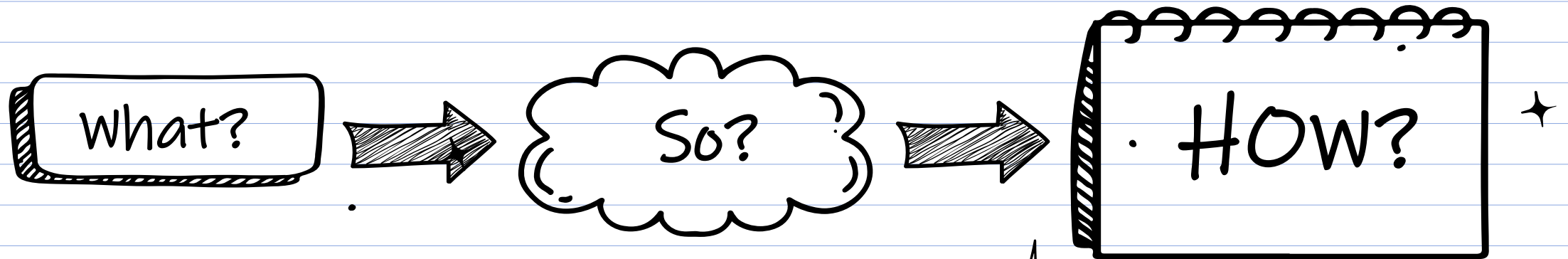


Course Cut-off Point &  
Entry Requirement

June Holiday Revision  
Plan

Intensive Revision &  
Consultations

# Putting things into perspective



Feedback from assignments?

Gaps identified from tests?

So, what does this mean for me?

How will I move forward?

# Plan.

## SUGGESTED JUNE HOLIDAY STUDY SCHEDULE

Week	Suggested activities	Resources
1	<ul style="list-style-type: none"><li>Go through notes on essay writing</li><li>Complete Holiday HW (Paper 1: NV MYE 2019 Essay)</li></ul>	<ul style="list-style-type: none"><li>Handout: <i>Content notes for sample essay questions</i> distributed before HBL</li><li>Notes on essay writing given in Sem 1</li></ul>
2	<ul style="list-style-type: none"><li>Go through notes on comprehension skills</li><li>Complete Holiday HW (Paper 2: TYS GCE O-Level 2017)</li><li>Content-building: Read up and create notes on common topics</li></ul>	<ul style="list-style-type: none"><li>Comprehension notes</li><li>Ten-year Series</li><li><a href="https://tinyurl.com/article">https://tinyurl.com/article</a></li></ul>
3	<ul style="list-style-type: none"><li>Content-building: Nature and the Environment</li><li>Content-building: Transport</li></ul>	<p>For <i>Nature and the Environment</i>:</p> <ul style="list-style-type: none"><li>Lecture video on</li><li>SLS Learning Series</li><li>Reference material distributed before</li></ul> <p>For <i>Transport</i>:</p> <ul style="list-style-type: none"><li>Lecture video on</li><li>SLS Learning Series</li></ul> <p>[Will be uploaded by middle of June]</p>
4	<ul style="list-style-type: none"><li>Content-building: Arts, Culture and Heritage (<i>*Imppt: in preparation for lessons in Term 3</i>)</li><li>Oral practice: record and send to teachers for feedback, if you wish</li></ul>	<ul style="list-style-type: none"><li>SLS Learning Series</li><li>Oral Practice videos and Goggle classroom</li></ul> <p>[Will be uploaded by middle of June]</p>

### to-do list

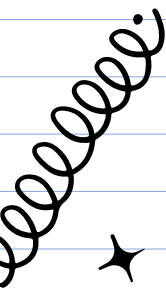


## Work on feedback.

1. Analyse your test scripts/ assignments
2. Get clarity from your teachers on specific areas you need to work on
3. Do targeted practice
4. Move on only after you have grasped the concepts/skills



# Prioritise.



English	Chemistry	Physics
PP1: → Situational Writing	* Energy changes	① Food resources
* → Essay	* Oxidation and reduction	② weather and climate
→ Editing	* salts	③ plate tectonics
PP2: → Visual text	* Periodic table	④ Tourism
* → Narrative text	* Metals (Extraction of metals)	<u>Social Studies</u>
* → Factual text	* Air	* Content and examples for JES
<u>AMATHS</u>	* Organic Chemistry (FO of Petrocumm)	* format for SBO
* Median graphs	* Alkanes, Alkenes	<u>OPE</u>
* Linear law	* Carboxylic acid	* latest chapters
* Proof in plane geometry	<u>physics</u>	
* Integration	* Force (resultant force)	
* Kinematics	* light (images formed)	
<u>EMATHS</u>	* wave	
* Prefixes	* Sound	
* Map scale	* Electromagnetic spectrum	
* function and graphs	* Electric hazards (wire and double insulation)	
* Set notation	* Fleming's left hand rule	
* Congruence and similarity		
* Vectors		

## To Do List (Prelims)

Maths by 13<sup>th</sup> June/31<sup>st</sup> June

- MYE 2018 P1

- MYE 2018 P2

- TYS

- Equations and inequalities

- LCF, HCF, Prime factorization

- MYE 2019 P2

- Revise weaker topics

• Ratio and proportion (TYS 1-7)

• Functions and graph (TYS 3.2, 3.3)

• Equations and inequalities (2.4-2.7)

• Problems real world contexts (4)

• Congruence and similarity (5.2)

\* Properties of circle (5.6)

\* Mensuration (6.3)

\* Coord geo (5.3)

\* Data analysis (7.1-7.3)

Physics by 30<sup>th</sup> June

• Topical TYS all chapters 1-20

\* Chinese by 30<sup>th</sup> May

• —, =, ≡

• O level prac paper

English by 30<sup>th</sup> June

- Revise sample essay qns notes

- Read reference notes for nature and environment

- Narrative text notes

- English TYS

- Comp practice

Geography by 30<sup>th</sup> June

- Study n understand MYE mark scheme

- Geo WS

- Tourism revision package

- Plate tech KA 1n2

- Plate tech KA 2n3

(Volc and earthquake)

Chemistry by 30<sup>th</sup> June



# Consolidate. ✨



## Content

- Go through topics
- Review content
- Understand and not just memorise

## SECTION II: ATOMIC STRUCTURE AND STOICHIOMETRY

### Overview

For over 2000 years, people have wondered about the fundamental building blocks of matter. As far back as 440 BC, the Greek philosopher Leucippus and his pupil Democritus coined the term atomos to describe the smallest particle of matter. It translates to mean something that is indivisible. In the eighteenth century, the chemist John Dalton, revived the term when he suggested that each element was made up of unique atoms and the atoms of an element are all the same. At that time, there were about 35 known elements. This simple model could explain the millions of different materials around us.

Differences between atoms give elements their different chemical properties. Atoms of one or more substances (reactants) undergo some 'rearrangements' during a chemical change (reaction). These rearrangements form new and different substances (products). After the chemical reaction, all the atoms of the reactants are still present in the products. Balanced chemical equations can be written because of the law of conservation of mass. These equations make it possible to predict the masses of reactants and products involved in chemical reactions.

Learning Outcomes	Content	Main Terms
Key Question 2: What landforms and associated tectonic phenomena are found at plate boundaries?		
<p>Students will be able to:</p> <ul style="list-style-type: none"> <li>• Discuss how plate movements influence the general distribution of landforms and associated phenomena</li> <li>• Describe the landforms and phenomena associated with plate movements</li> <li>• Explain the causes of landforms and phenomena associated with plate movements</li> <li>• Describe the structure of volcanoes</li> <li>• Explain the characteristics of volcanoes</li> <li>• Explain the formation of volcanoes</li> <li>• Discuss the benefits and risks of living in volcanic areas</li> <li>• Discuss the impact of earthquakes on people living in areas prone to this natural hazard</li> </ul>	<p>A) <u>Knowledge</u></p> <ul style="list-style-type: none"> <li>• Plate movements and associated landforms               <ul style="list-style-type: none"> <li>– Divergent: Rift valleys and block mountains</li> <li>– Convergent: Fold mountains</li> <li>– Divergent and Convergent: Volcanoes</li> </ul> </li> <li>• Phenomena and their causes               <ul style="list-style-type: none"> <li>– Earthquakes</li> <li>– Tsunamis</li> <li>– Volcanic eruptions</li> </ul> </li> <li>• Structure of volcanoes               <ul style="list-style-type: none"> <li>– Crater</li> <li>– Caldera</li> <li>– Vent</li> <li>– Magma chamber</li> </ul> </li> <li>• Characteristics and formation of volcanoes               <ul style="list-style-type: none"> <li>– Shield volcano (e.g. Erta Ale in Ethiopia)</li> <li>– Stratovolcano (e.g. Puy de Domes in France and Mt Pinatubo in Philippines)</li> <li>– Viscosity of lava                   <ul style="list-style-type: none"> <li>o high-silica vs low-silica</li> </ul> </li> </ul> </li> <li>• Benefits of living in volcanic areas               <ul style="list-style-type: none"> <li>– Fertile soil</li> <li>– Precious stones and minerals</li> <li>– Tourism</li> <li>– Geothermal energy</li> </ul> </li> <li>• Risks of living in volcanic areas               <ul style="list-style-type: none"> <li>– Massive destruction by volcanic materials</li> <li>– Pollution</li> </ul> </li> <li>• Risks associated with living in earthquake zones               <ul style="list-style-type: none"> <li>– Disruption of services</li> <li>– Landslides</li> <li>– Destruction of properties and infrastructure</li> <li>– Loss of lives</li> <li>– Tsunamis</li> </ul> </li> </ul>	<ul style="list-style-type: none"> <li>• Tensional force</li> <li>• Compressional force</li> <li>• Folding</li> <li>• Fold mountains</li> <li>• Rift valley</li> <li>• Block mountain</li> <li>• Volcano</li> <li>• Pacific Ring of Fire</li> <li>• Shield volcano</li> <li>• Stratovolcano</li> <li>• Crater</li> <li>• Caldera</li> <li>• Vent</li> <li>• Magma chamber</li> <li>• Magma</li> <li>• Lava</li> <li>• Viscosity</li> <li>• Geothermal energy</li> <li>• Earthquake</li> <li>• Focus</li> <li>• Epicentre</li> <li>• Richter scale</li> <li>• Aftershocks</li> <li>• Tsunami</li> <li>• Volcanicity</li> </ul>

# Consolidate.



## Content

- Go through topics
- Review content
- Understand and not just memorise



## Skills

- Apply to different contexts/ qns
- Take into account feedback



## Notes

- Highlight/ flag
- Outlines
- Summaries
- Collate



Plan.

Work on feedback.

Prioritise.

Consolidate.

Grit is passion and perseverance  
for very long-term goals.

Grit is having stamina.

Grit is sticking with your  
future, day-in, day-out.

Not just for the week,  
not just for the month,  
but for *years*.

And working really hard  
to make that future a  
reality. Grit is living life  
like it's a marathon,  
not a sprint.

—*Dr. Angela Lee Duckworth*







**CHIJ St. Joseph's Convent**

*Since 1938*

# **Sec 4/5 Parent-Teacher Meeting**

**Year Head Address**

**Ms Daphne Teo**

# Agenda

1. Journeying with our girls
2. Academic Matters
3. CCA & LEAPS 2.0
4. Our Support
5. Home-School Partnership



**CHIJ St. Joseph's Convent**  
*Since 1938*

1. Journeying with our girls

**Sec 2:  
Time to  
Flourish**

**Sec 3:  
Embracing  
Change**

Sec 4/5 Level Focus:  
Leading & Impacting Others

**Sec 4/5:  
Light the Way**

**Sec 1:  
A Whole New  
World**



## 2. Academic Matters

- A. Structure of A School Day
- B. GROW Protocol & 3Ps of Engagement
- C. Curriculum & Assessment
- D. Home-Based Learning
- E. Key Events for the year





# A. Structure of A School Day

CHIJ ST. JOSEPH'S CONVENT, Singapore

	0	1	2	3 LS SB	4	5	6	7	8 US SB	9	10	11	12
	7:30 - 7:45	7:45 - 8:20	8:20 - 8:55	8:55 - 9:30	9:30 - 10:05	10:05 - 10:40	10:40 - 11:15	11:15 - 11:50	11:50 - 12:25	12:25 - 13:00	13:00 - 13:35	13:35 - 14:10	14:10 - 14:45
Mo	MA	AS/CCE	RECESS	EL	EL	EL	SCI HGH / TAUNG RHY 2 SCH-BD SCI LAW / JESSIE / TAN / JESSIE / TAN	SCI HGH / TAUNG RHY 2 SCH-BD SCI LAW / JESSIE / TAN / JESSIE / TAN	FALA FALA FALA FALA	PE HGH / TAUNG RHY 2 SCH-BD SCI LAW / JESSIE / TAN / JESSIE / TAN	Lunch	HUM OTED / KANG / POH HUM GOH / GOH / GOH	
Tu	MA	MT MT MT	RECESS	EM	EM	SS	SS	SS	PE	PE	Lunch	SCI	
We	MA	EM	RECESS	MT MT MT	MT MT MT	SCI SCI SCI	SCI SCI SCI	SCI SCI SCI	FALA FALA FALA FALA	PE HGH / TAUNG RHY 2 SCH-BD SCI LAW / JESSIE / TAN / JESSIE / TAN	Lunch	EL	
Th	MA	CCE	RECESS	EM	EM	PE	PE	PE	FT FT FT FT	FT FT FT FT	Lunch	EL	
Fr	MA	EM	RECESS	MT MT MT	MT MT MT	EL	EL	EL	HUM HUM	HUM HUM	Lunch	SS	

Timetable generated 28/12/2022

ODD / EVEN Week

Recess

- 8.55am- 9.30am

Snack Break

- 11.50am – 12.25pm

Lunch

- 1.00pm – 1.35pm

Academic Support Programme

- 2.15pm – 2.50pm
- 2.50pm – 3.30pm

CCA

- 3.45pm onwards



**CHIJ St. Joseph's Convent**  
Since 1938



nvent

# School Opening and Closing Hours

Period	Main gate opens	Main gate closes
<b>Normal School Day</b>	6.00am	6.45am*
<b>School Holidays</b>	6.00am	6.00pm
<b>School Holidays (Protected time)</b>	7.00am	5.00pm
<i>*Main gate will close at 5.00pm on Focus Friday and Eat with Your Family Days to promote better school-life harmony. Please refer to school calendar for upcoming dates.</i>		





## B. GROW Protocol & 3Ps of Engagement



**LET'S GROW TOGETHER**

**GREET**  
each other

- Respect one another
- Greet the teacher(s) at the start and end of each lesson

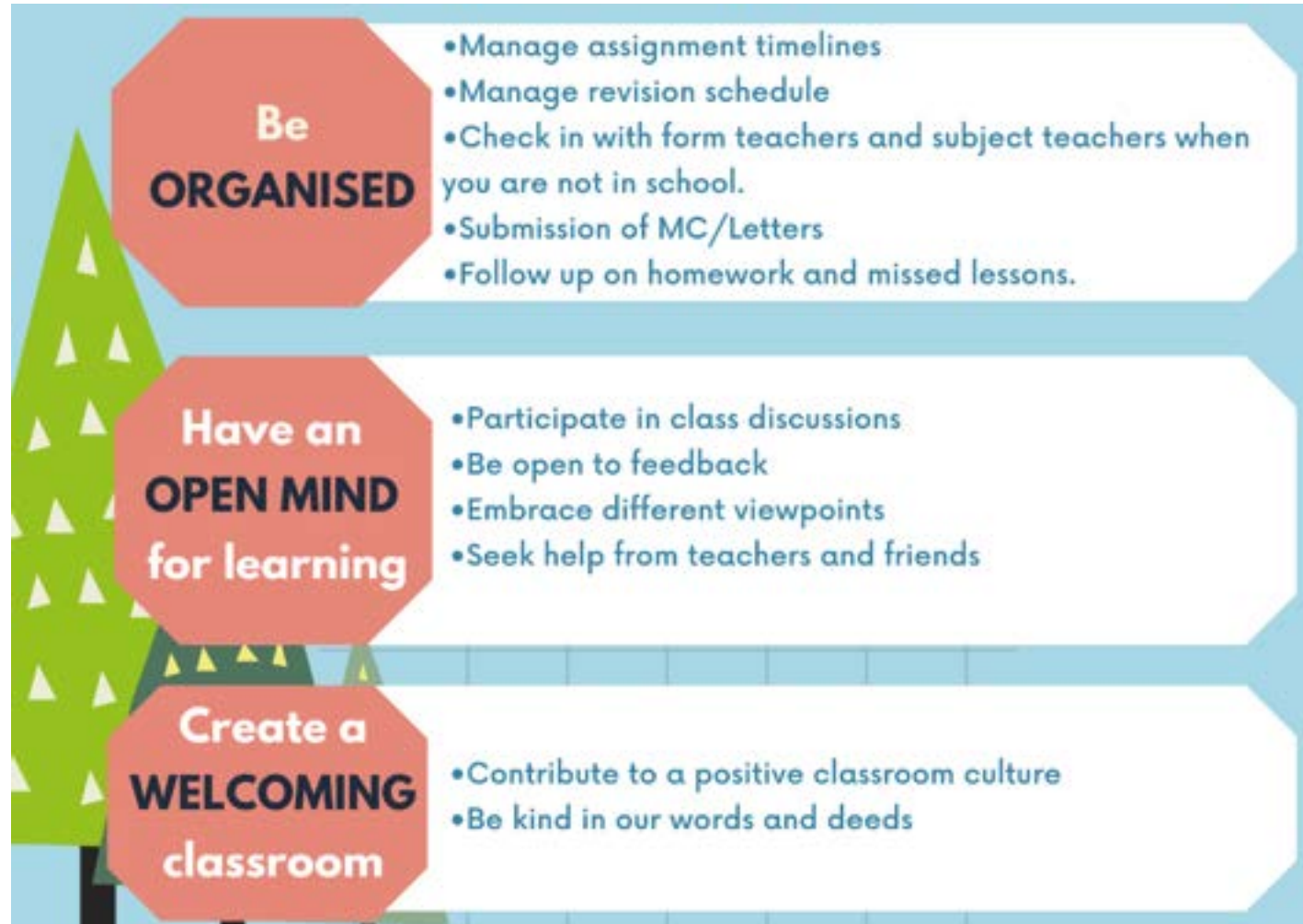
**Have**  
**READINESS**

- Be properly attired
- Have the learning materials ready
- Check Google Classroom/SLS for instructions on HBL days
- Ensure that classroom environment is ready for learning



**CHIJ St. Joseph's Convent**  
*Since 1938*

## B. GROW Protocol & 3Ps of Engagement





## B. GROW Protocol & 3Ps of Engagement

Polite	<ul style="list-style-type: none"><li>• Be mindful of what is said and how (the tone) it is being said</li></ul>
Positive	<ul style="list-style-type: none"><li>• Address the issue and not the person</li><li>• Do not spread rumours</li><li>• Speak responsibly</li></ul>
Perspectives	<ul style="list-style-type: none"><li>• Do not jump to conclusions</li><li>• Listen &amp; understand the other first</li></ul>



# 3 Ps of Engagement

---

**Polite**

---

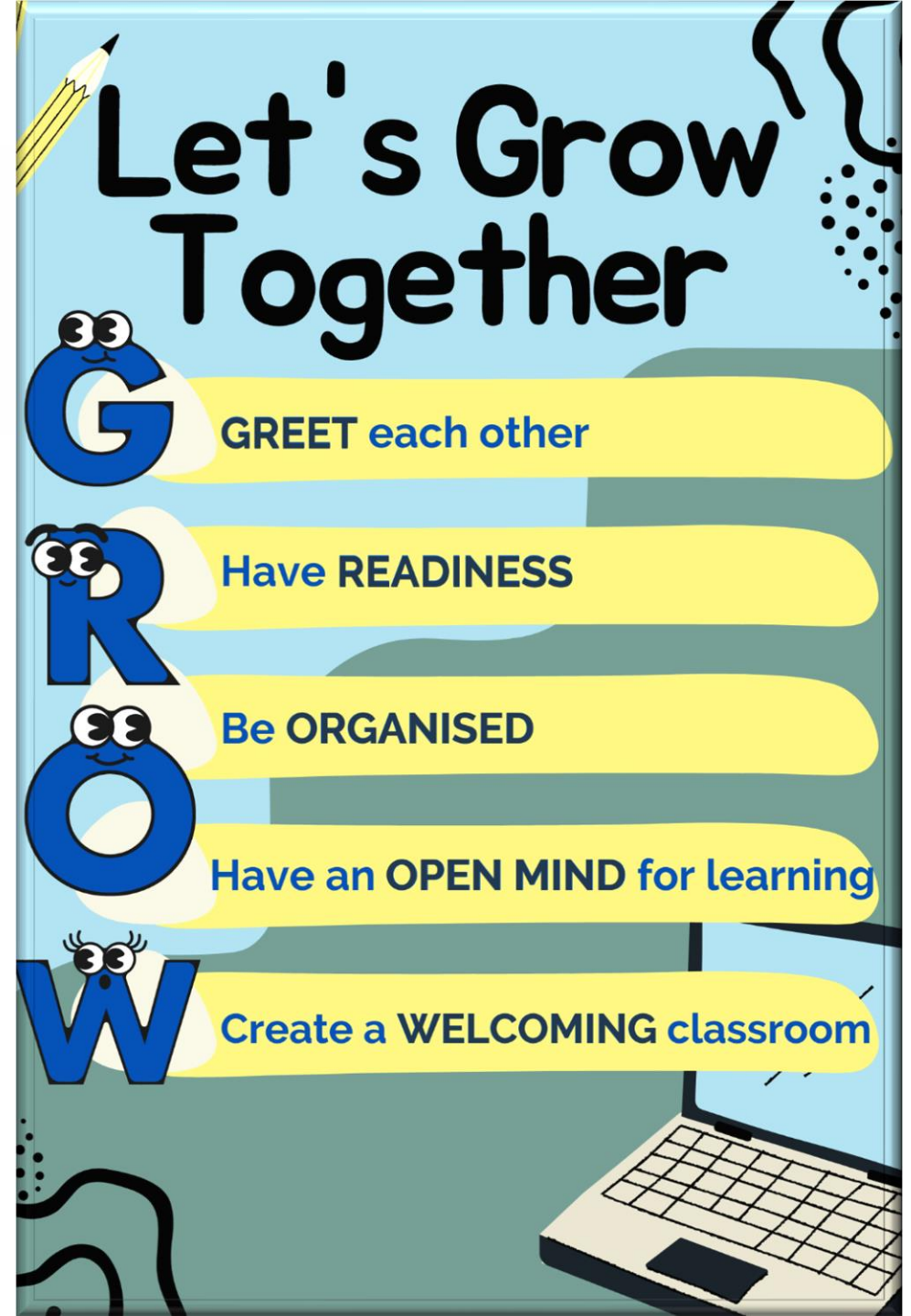
**Positive**

---

**Perspective**



**CHIJ St. Joseph's Convent**  
*Since 1938*



# C. Curriculum & Assessment - Homework

Homework is meant for students to:

- ❑ Consolidate and apply the skills and knowledge learnt in the classroom
- ❑ Receive timely feedback
- ❑ Develop good study habits and promote self-directed learning and strengthen studying skills



For more information, please refer to the Curriculum Policy document for details.

## C. Curriculum & Assessment

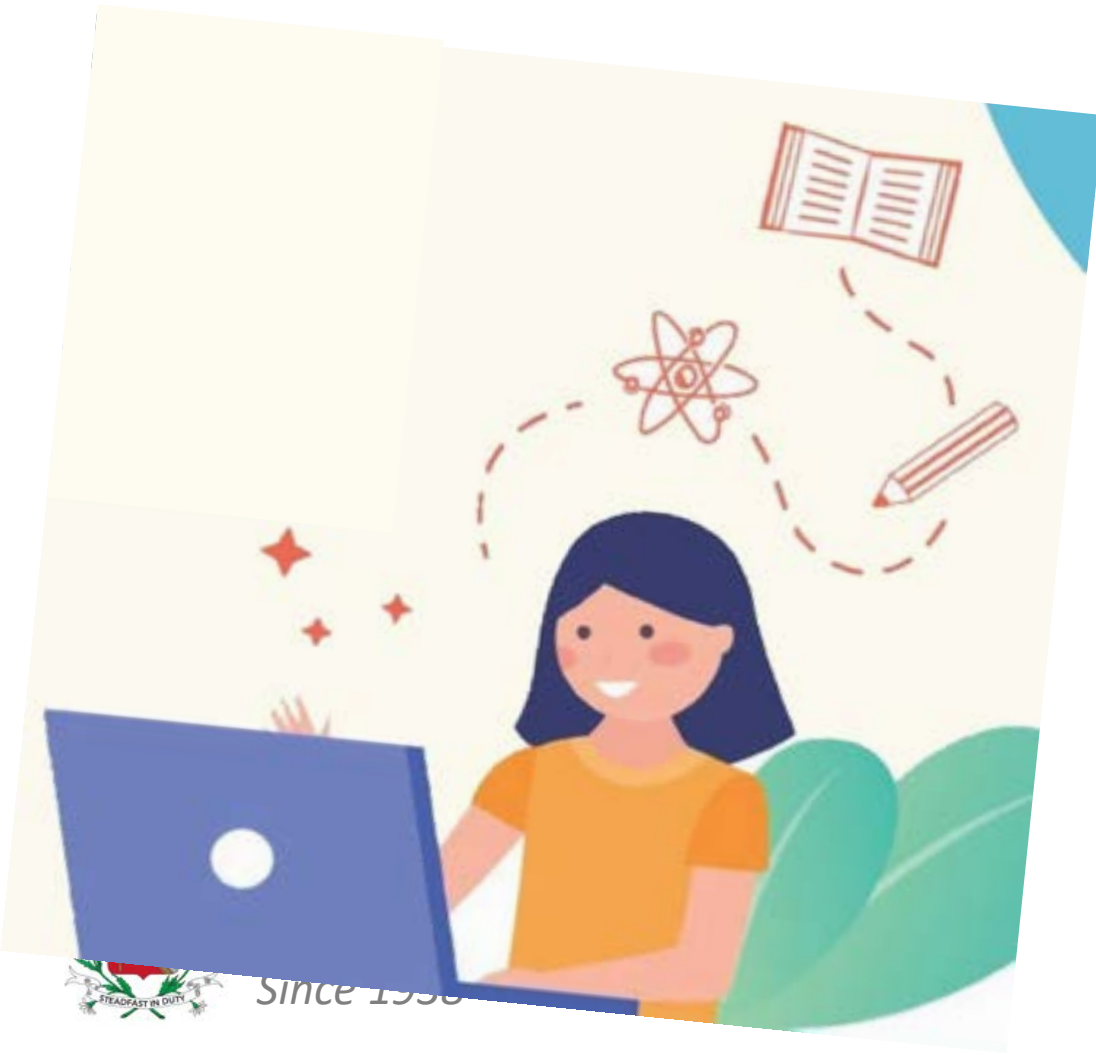
Subjects	WA1	WA2	WA3	EOY
All except selected subjects such as NTIL, 3rd Language, SS (NT)	0%	0%	0%	100%
NTIL	0%	0%	0%	100%
3rd Language (Bahasa Indonesia, Arabic @ MOELC) + Foreign Languages	0%	0%	0%	100%
<ul style="list-style-type: none"> <li>Assessment is integral to the learning process</li> <li>Examples of WA includes: Class Test, Project, Journal</li> <li>Schedule of WAs will be issued to all via PG.</li> </ul>				



# D. Home-Based Learning

## ✓ HBL Sessions in Semester 1

Term 1	Term 2
27 Jan	28 Mar
8 Feb	25 Apr
23 Feb	26 May
7 Mar	





## D. Home-Based Learning

Passion Ignite 2022

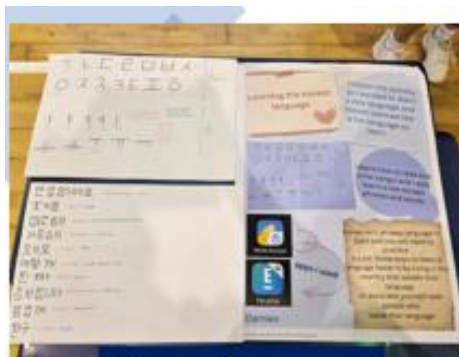
- ✓ Part of **Education and Careers Guidance** journey in SJC
- ✓ Dedicated time on HBL days for students to pursue an **interest** or **passion** or pick up **new skills**
- ✓ Learn outside of the curriculum
- ✓ Independent, Passionate and **Lifelong Learner**.



**CHIJ St. Joseph's Convent**  
Since 1938

# D. Home-Based Learning

## Passion Ignite 2022



Korean Language



Coding



Drawing/Painting



Chinese  
Calligraphy/ Painting



Gardening



**CHIJ St. Joseph's Convent**  
Since 1938

# Key events for the year

Term	Events	Date(s)
Term 1	• Orientation	3 – 4 Jan
	• SIL - Passion Ignite	HBL days
	• Level Camp <ul style="list-style-type: none"><li>• Course Advising e-Workshop</li><li>• EAE, PFP Talk by Poly</li><li>• DSA Talk by JCs</li></ul>	1 – 3 Mar



# Key events for the year

Term	Events	Date(s)
Term 2	• EAE preparatory workshop (S4E/5N)	May
	• <b>Direct School Admission (DSA)</b>	May
	• Mid Year PTM	26, 27 May



# Key events for the year

Term	Events	Date(s)
Term 3	• <b>Early Admission Exercise (EAE)</b>	June onwards
	• N and O levels Oral Examination	July - August
	• Prelims for S4N	25 Jul – 2 Aug
	• Graduation Prayer Service	15 August
	• Prelims for S4E5N (I)	22 Aug – 26 Aug

Dates are tentative



**CHIJ St. Joseph's Convent**  
*Since 1938*



# Key events for the year

Term	Events	Date(s)
	• Graduation Ceremony	30 Sep
	• O Level Examinations	17 Oct – 14 Nov
	• Graduation Night (after O levels)	14 November (TBC)

Dates are tentative



**CHIJ St. Joseph's Convent**  
*Since 1938*

# SEAB Exam Calendar – 0 Level

Event		Timeline
Registration	2 – 10 March	
Oral Examination	CLB	6 July
	MT	7-17 July
	English	25 July – 3 Aug
	HMT	28 July- 3 Aug
Listening Comprehension	MT / CLB	4 July
	English	19 October
Practical Examinations	Science	4 – 17 October
Written Examinations	MT / CLB	29/30 May
	All subjects	20 October – 10 November



**CHI St. Joseph's Convent**  
Since 1938

Dates are tentative

### 3. CCA & LEAPs 2.0



# CCA



**CHIJ St. Joseph's Convent**  
*Since 1938*



## 4. CCA and LEAPS 2.0

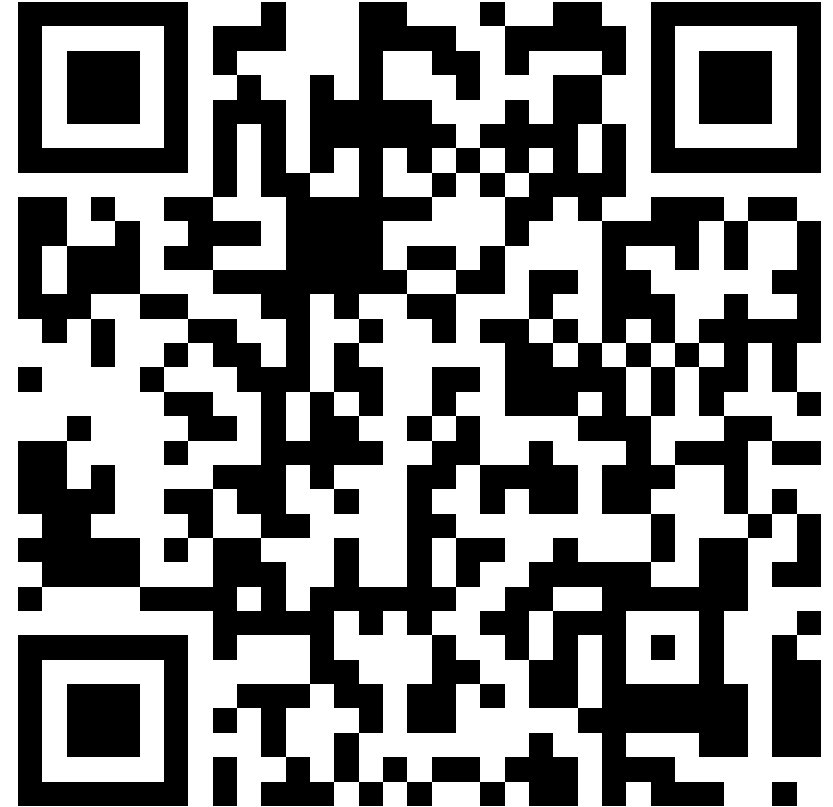
Co-Curricular Attainment	Details
Excellent (2 bonus points)	Student who attains a minimum Level 3 in all four domains with at least a Level 4 in one domain.
Good (1 bonus point)	Student who attains a minimum Level 1 in all four domains with any one of the following: <ul style="list-style-type: none"><li>i. At least Level 2 in three domains;</li><li>ii. At least Level 2 in one domain and at least Level 3 in another domain; or</li><li>iii. At least Level 4 in one domain.</li></ul>
Fair	Student's attainment in co-curricular will not translate into any bonus points.





Details of LEAPS 2.0 can be downloaded from MOE website;  
You may scan Qrcode or access the link

<https://www.moe.gov.sg/education-in-sg/our-programmes/cca/leaps2-0>



**CHIJ St. Joseph's Convent**  
*Since 1938*

# CCA Stand Down

## CCA Stand Down Date in 2023

Level	
Sec 4/5	Term 2 Week 6 From 28 April 2023*

\* Pending more information from NSG



**CHIJ St. Joseph's Convent**  
*Since 1938*

## 4. Supporting Our Girls

# A. Academic Support

## Semester 1

- Academic Support Programme (ASP)
- Mother Tongue O Level Intensive Preparation (MOLIP)

## Semester 2

- Academic Support Programme (ASP)
- Consultation sessions
- Evening Study



## 6. Support for Student Well-being



**CHIJ St. Joseph's Convent**  
Since 1938



## 6. Support for Student Well-being



**CHIJ St. Joseph's Convent**  
*Since 1938*

# Post- Secondary Education



**EDUCATION AND CAREER GUIDANCE (ECG)**

*"Which subject combination should I choose?"*

*"Where should I go after I graduate?"*

*"I don't know what I'm interested in!"*

**Sounds familiar to you?**  
**Chat with your ECG Counsellor**  
Mondays and some Fridays  
9 am–5 pm in the ECG & SWO room at B1

**STEP 1: Email My Pan your concerns.**

**OR BOOK AN APPOINTMENT WITH MS PAN VIA ONE OF THE FOLLOWING:**

- (I) ONLINE BOOKING (scan QR or <https://go.gov.sg/sjcecg>)
- (II) EMAIL: [pan\\_miaohua@schools.gov.sg](mailto:pan_miaohua@schools.gov.sg)
- (III) TELEGRAM: @ECGC\_Ms\_Pan

**STEP 2: MARK THE DATE**  
Mark the appointment date in your calendar  
See you soon!

Call 6400 7335 ext 133 (on Mondays & some Fridays)

## Education & Career Guidance (ECG)

Book an appointment with ECG counsellor, Ms Pan via the link below.

<https://go.gov.sg/sjcecg>



## Education Career Guidance (ECG) @ SJC

More information on ECG @ SJC can be found on the school website.

<https://chijstjosephsconvent.moe.edu.sg/student-development/education-and-career-guidance>

## 6. Home School Partnership

## 6. Support for Student Well-being



### Communicate like a parent and a friend

Show interest in their friendships, thoughts, and feelings, and listen without judgement.



### Acknowledge that their friends may matter more than before

Understand that their friends' opinions may be very important to them at this age.



### Respect their personal space to learn and grow

Allow them to develop their identity, manage their emotions, and handle challenges responsibly by themselves.



### Eat meals together regularly to check in with one another

Try some conversation starters such as “What did you enjoy doing today?” or “What are you looking forward to in school tomorrow?”



**CHIJ St. Joseph's Convent**

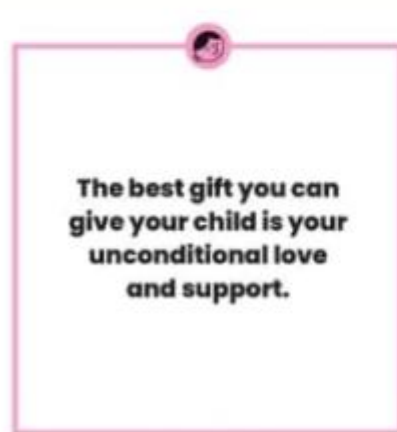
*Since 1938*

Source: Parent Kit - Caring for Our Children

Available: Dec 2022, Parent Gateway



# Online Resources



<https://go.gov.sg/parentingwithmoesg>

Parentingwith.moesg  
Instagram Page



**CHIJ St. Joseph's Convent**  
Since 1938





*Since 1938*



**CHIJ St. Joseph's Convent**  
Since 1938



**CHIJ St. Joseph's Convent**

*Since 1938*

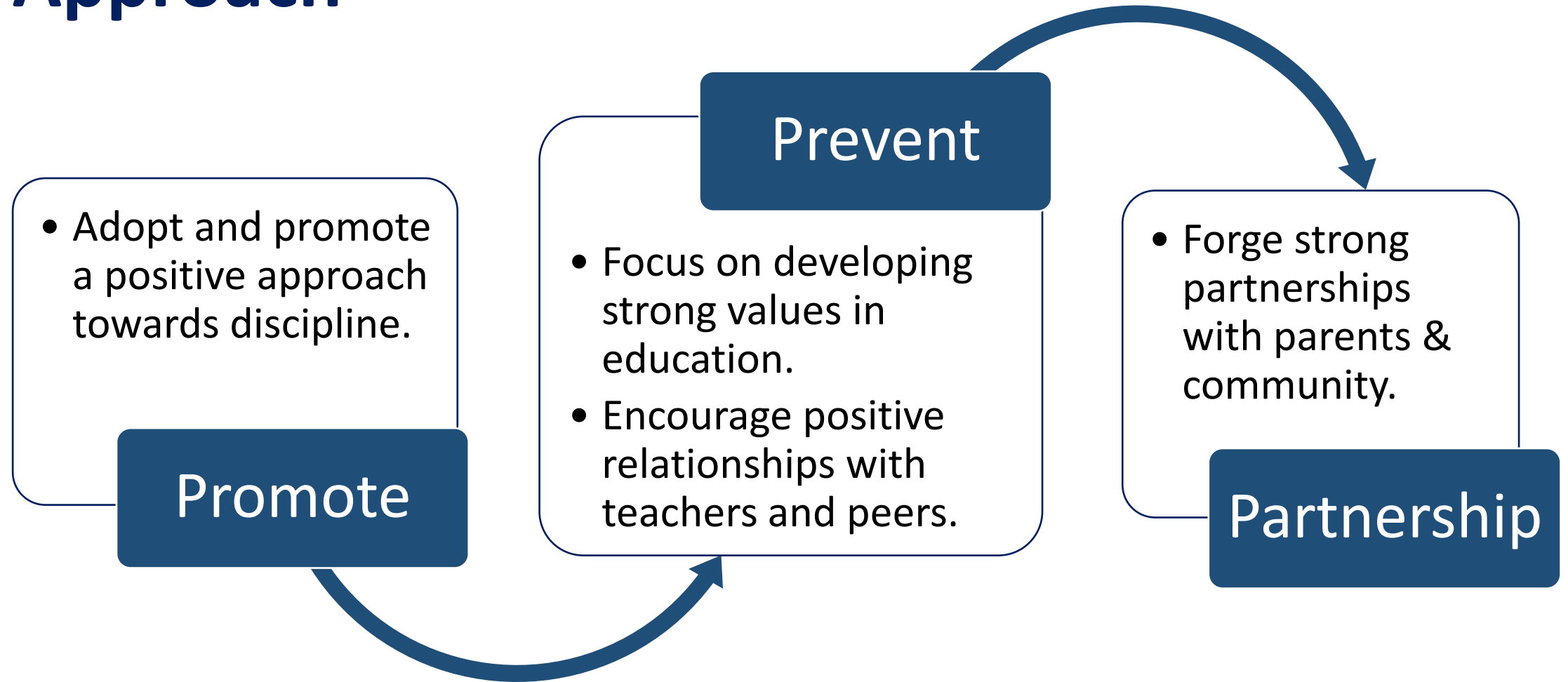
# **SJCian's Code of Conduct**

**Sec 4 and 5 Parent-Teacher Meeting**

**17 February 2023**



# Approach



# Regular Attendance

- Regular and punctual attendance in school contributes significantly to positive outcomes in the education of our girls.
- Daily attendance during term time is compulsory. Students are expected to be present for CCA and school activities.
- All absences must be covered by Medical Certificates (MC) or letters of excuse signed by parents/guardians. The school accepts up to 4 letters of excuse per term.
- All MCs or letters must be submitted to the form teachers promptly upon your daughter's return to school.





# Punctuality

- Students should be in the hall or classrooms by **7.30am** for morning assembly.
- Students are encouraged to be in school early to have time to settle down and be in the right frame of mind to learn.



# Responsible Use of Devices

- Electronic devices should be used responsibly so that students can benefit from its affordances and minimise distraction to their learning.
- The use of mobile phones is not allowed during school hours, unless otherwise instructed by their teachers. **Electronic devices may be confiscated if they are not used in an appropriate or responsible manner.**
- Parents may call the **General Office at 6489 7580** in the event of an emergency.



# Zero Tolerance on Bullying

- In our CHIJ Schools, we uphold the basic principle of respecting the dignity of each person we interact with.
- Everyone in our school community has the responsibility and a role to play in building a safe learning environment where we treat each other with respect and understanding.
- As such, our school will not tolerate any unlawful or disruptive behaviour, including any form of bullying, cyber-bullying, intimidation or retaliation.



# Attire and Grooming

Long hair neatly tied with white, blue or black accessories.

One pair of simple, identical ear studs to be worn on the ear lobes.

Name tag to be worn above the school badge.

Only a watch is to be worn on the wrist.

Pinafore should reach the knee.

Only school socks to be worn.

Shoes to be predominantly white.



The Code of Conduct can be found on the school's website, including information on conduct descriptors and examination rules.



The image is a screenshot of the CHIJ St. Joseph's Convent website. The header features the school's crest on the left, followed by the name "CHIJ St. Joseph's Convent" and the motto "Simple in Virtue, Steadfast in Duty" with "Since 1938" below it. On the right, there are icons for home, search, Instagram, and Facebook. A navigation bar contains links for "About Us", "Curriculum", "Student Development", "CCA", "Special Programmes", "Community", and "Useful Links". The "Student Development" link is highlighted with a yellow box, and a dropdown menu is visible below it, listing "Code of Conduct", "Character & Citizenship Education (CCE)", "R3 Development Programme", "Student Leadership Development", "Values-In-Action", and "Education and Career Guidance". On the left side of the page, there is a large brown diagonal banner with the text "Student Development" in white. The background of the website features a photograph of three female students in school uniforms smiling.

**CHIJ St. Joseph's Convent**  
*Simple in Virtue, Steadfast in Duty*  
• Since 1938 •

About Us Curriculum **Student Development** CCA Special Programmes Community Useful Links

**Student Development**

- Code of Conduct
- Character & Citizenship Education (CCE)
- R3 Development Programme
- Student Leadership Development
- Values-In-Action
- Education and Career Guidance

**Student Development**



# Women of Integrity with the Passion to Pursue Excellence

Disciplined Behaviour and Mind  
to Pursue Excellence



**CHI St. Joseph's Convent**  
*Since 1938*

